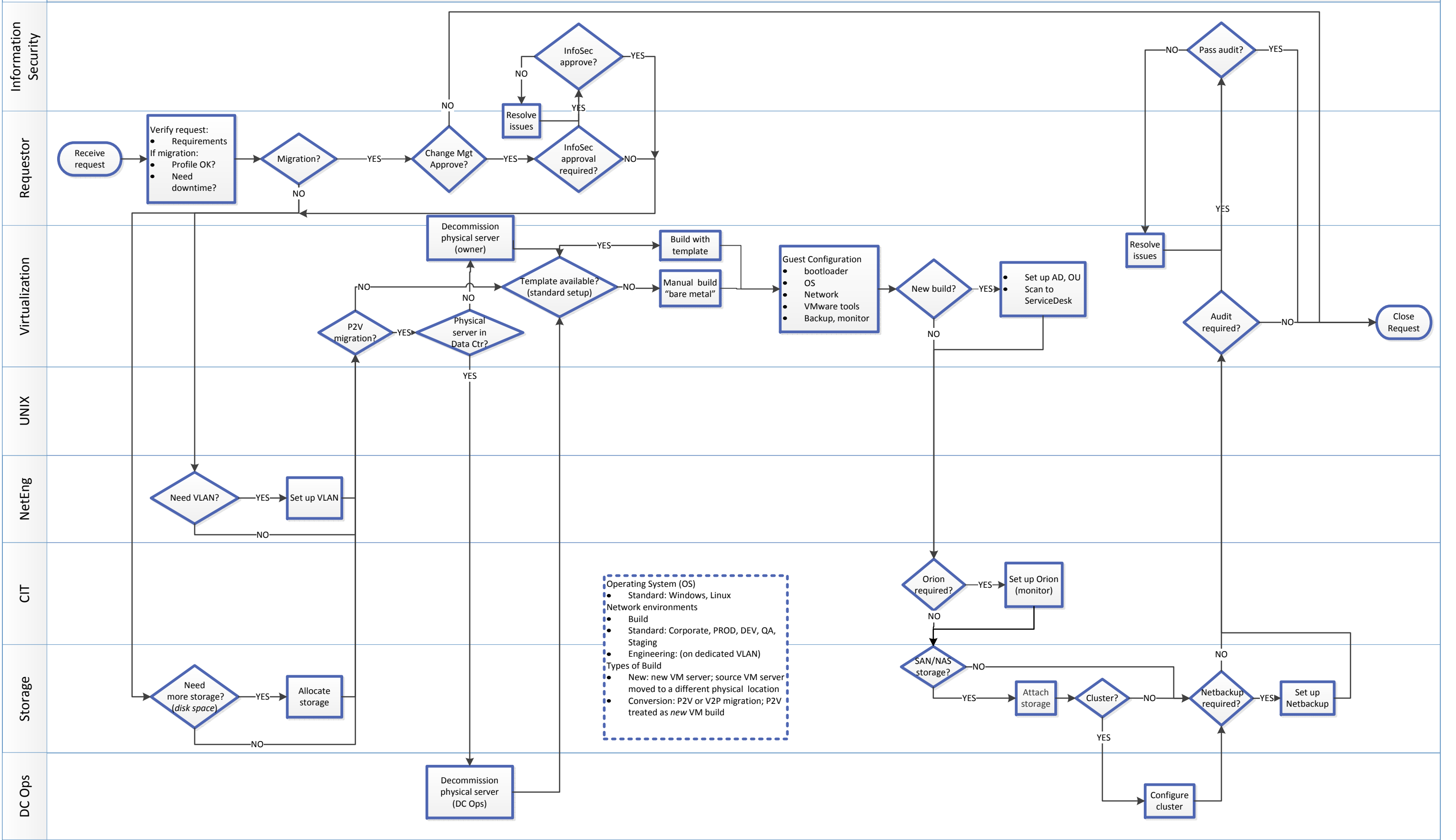


VM Build and Migration Processes – Engineering or Corporate network

Phase



Operating System (OS)
 • Standard: Windows, Linux
 Network environments
 • Build
 • Standard: Corporate, PROD, DEV, QA, Staging
 • Engineering: (on dedicated VLAN)
 Types of Build
 • New: new VM server; source VM server moved to a different physical location
 • Conversion: P2V or V2P migration; P2V treated as *new* VM build